



# CAMERA INSPECTION & MOLD MONITORING SYSTEM

🌐 [www.alvincorp.com](http://www.alvincorp.com)

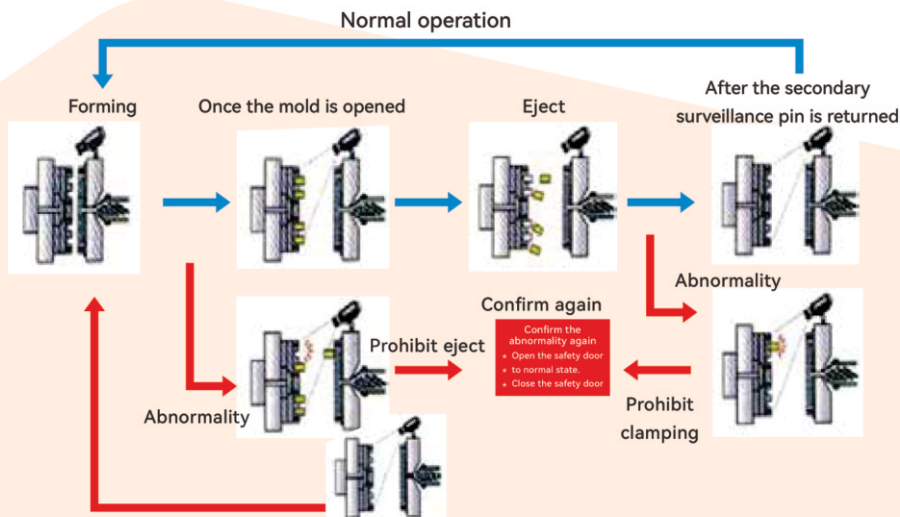
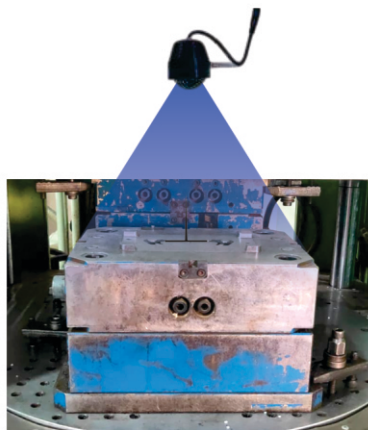
# MOLD GUARD

Our system is designed to prevent accidents that could damage your molds and dies, saving you significant costs on repairs and maintenance. By reducing the risk of accidents, it minimizes downtime, ensures that defective parts are not mixed with quality ones, and helps you to Achieve your production targets while eliminating customer complaints.

## MOLD GUARD FOR HORIZONTAL MACHINE



## MOLD GUARD FOR VERTICAL MACHINE





### What camera system detects ?

- Avoid double shot
- Ensure all Cavities for multicavity mold
- Ensure all cavities Ejected or not
- Ensure core & slider position
- Ensure the ejector pins position after Retraction.
- Inspect the part for short filled & flashes
- Ensure the insert presence if insert or overmoulding in mould
- Ensure the insert position and orientation in mould
- Avoid the mold damage due to cavity sticking at upper mold in Vertical machine



### Features

- One system can be used with a 4 camera system
- High-definition touch screen 12.5 " display
- High resolution 5 mega pixel camera
- Interlocked with any injection moulding machine or SPM
- Bluetooth Connectivity
- Get real time data



### Where can We Integrate?

- On Horizontal Injection molding machine
- Vertical Injection molding machine
- On any special purpose machine
- Assembly line



### Application ?

- Electrical & Electronics Parts
- Automotive Parts
- Medical Parts
- Caps & Closure & packaging industry
- Irrigation Products
- Insert molding overmolding parts
- Any molding process.

**Sharp vision  
like an EAGLE**

**Non- luminous  
light source**

**Controlled by  
SMART Software**

## THE PACKAGE INCLUDES:



Gigabit network  
industrial camera



Infrared light source



6 in 6 out version



High-flex  
signal cable



Switching  
power supply

We reserve the right to improve product, change appearance or specifications without prior notice.  
The product photos in the catalogue are for reference only.

# CUSTOMERS GLOBALLY

**FOXCONN®**

**JABIL**

**FLEXTRONICS**



**Tyco Electronics**  
Our commitment. Your advantage.

**Quanta Computer**

**DELPHI**

**molex®**  
one company > a world of innovation

**Panasonic**  
ideas for life

**GoerLight**

**AAC Technologies**

**WDI®**

**双林集团**  
SHUANGLIN GROUP

**MITAC**  
EMPOWER THE e-WORLD  
www.mitac.com

**ECHOM**

**MODVAK**

**Dias**

**TT**  
Connect & Grow

**UNO MINDA**  
DRIVING THE NEW

**SPARK MINDA**  
Powered by Passion

**elmex**  
Since 1983

**Plastech Solutions**

**KON**  
MOULDERS



An ISO 9001 : 2015 Company

## CONTACT US

**Alvin Plastic Machinery (India) Pvt Ltd**

📍 Gat no 468, Near Talwade IT Park, Talwade Chowk, Talwade, Pune-412114.

☎ 9823265234 / 9850858890 ✉ yogesh@alvincorp.com 🌐 www.alvincorp.com

**Branches : Pune, Mumbai, Delhi, Chennai.**